

Research article

Open Access

## Wnt/Wingless signaling through $\beta$ -catenin requires the function of both LRP/Arrow and frizzled classes of receptors

Liang Schweizer\* and Harold Varmus

Address: Cell Biology Program, Sloan-Kettering Institute for Cancer Research, 1275 York Avenue, New York, NY 10021, USA

Email: Liang Schweizer\* - [schweizl@mskcc.org](mailto:schweizl@mskcc.org); Harold Varmus - [varmus@mskcc.org](mailto:varmus@mskcc.org)

\* Corresponding author

Published: 2 May 2003

Received: 24 February 2003

BMC Cell Biology 2003, 4:4

Accepted: 2 May 2003

This article is available from: <http://www.biomedcentral.com/1471-2121/4/4>

© 2003 Schweizer and Varmus; licensee BioMed Central Ltd. This is an Open Access article: verbatim copying and redistribution of this article are permitted in all media for any purpose, provided this notice is preserved along with the article's original URL.

### Abstract

**Background:** Wnt/Wingless (Wg) signals are transduced by seven-transmembrane Frizzleds (Fzs) and the single-transmembrane LDL-receptor-related proteins 5 or 6 (LRP5/6) or Arrow. The aminoterminals of LRP and Fz were reported to associate only in the presence of Wnt, implying that Wnt ligands form a trimeric complex with two different receptors. However, it was recently reported that LRPs activate the Wnt/ $\beta$ -catenin pathway by binding to Axin in a Dishevelled – independent manner, while Fzs transduce Wnt signals through Dishevelled to stabilize  $\beta$ -catenin. Thus, it is possible that Wnt proteins form separate complexes with Fzs and LRPs, transducing Wnt signals separately, but converging downstream in the Wnt/ $\beta$ -catenin pathway. The question then arises whether both receptors are absolutely required to transduce Wnt signals.

**Results:** We have established a sensitive luciferase reporter assay in *Drosophila* S2 cells to determine the level of Wg – stimulated signaling. We demonstrate here that Wg can synergize with DFz2 and function cooperatively with LRP to activate the  $\beta$ -catenin/Armadillo signaling pathway. Double-strand RNA interference that disrupts the synthesis of either receptor type dramatically impairs Wg signaling activity. Importantly, the pronounced synergistic effect of adding Wg and DFz2 is dependent on Arrow and Dishevelled. The synergy requires the cysteine-rich extracellular domain of DFz2, but not its carboxyterminus. Finally, mammalian LRP6 and its activated forms, which lack most of the extracellular domain of the protein, can activate the Wg signaling pathway and cooperate with Wg and DFz2 in S2 cells. We also show that the aminoterminal of LRP/Arr is required for the synergy between Wg and DFz2.

**Conclusion:** Our study indicates that Wg signal transduction in S2 cells depends on the function of both LRPs and DFz2, and the results are consistent with the proposal that Wnt/Wg signals through the aminoterminal domains of its dual receptors, activating target genes through Dishevelled.

### Background

The secreted glycoproteins in the Wnt/Wingless (Wg) family serve diverse functions in developmental processes, ranging from cell fate specification and cell proliferation to cell migration and cell polarity [1,2], and deregulation

of the Wnt signaling pathway can lead to cancer [3,4]. In a simplified model of the canonical Wnt/ $\beta$ -catenin signaling pathway, the binding of Wnts to their receptors activates a downstream component, Dishevelled (Dsh). Dsh in turn inhibits glycogen synthase kinase (GSK)- $3\beta$  in the

$\beta$ -catenin destruction complex, which mainly consists of Axin, GSK-3 $\beta$ , adenomatous polyposis coli (APC) and  $\beta$ -catenin. Consequently, the level of cytoplasmic  $\beta$ -catenin rises, and stabilized  $\beta$ -catenin, together with the transcriptional factor LEF/TCF, regulates the transcription of Wnt target genes.

The mechanism by which the Wnt signal is transduced through its transmembrane receptors is not clear. Wnt proteins have been shown to bind to Frizzleds (Fzs), which are seven-transmembrane receptors [5,6]. The binding of Wnts occurs within an aminoterminal cysteine-rich-domain (CRD) of Fzs. At least 11 vertebrate and 4 *Drosophila* Fz genes <http://www.stanford.edu/~rnusse/wntwindow.html> have been identified. However, their functions and ligand specificities remain to be understood. Recently, it was reported that two single-transmembrane proteins of the LDL-receptor-related proteins (LRP) family, LRP5 and LRP6, are also involved in receiving the Wnt signal [7–9]. *Drosophila* Arrow (Arr), which is homologous to murine and human LRP5 and LRP6, was shown to be essential for Wg signaling. Genetic data from flies and mice indicate that Arr and LRP6 play a positive role in Wnt signaling [7,9]. A genetic epistasis experiment placed Arr between Wg and Dsh [9], acting in parallel or downstream of DFz. In addition, LRP6 has been reported to bind Wnt-1 and to associate with Fz in a Wnt-dependent manner [8]. Taken together, these results support a co-receptor model: upon exposure to Wnts, LRP5 or LRP6 forms a complex with Wnt and Fzs, transducing the Wnt signal downstream to stabilize cytoplasmic  $\beta$ -catenin. Consistent with this, it has been demonstrated that Dickkopf-1 inhibits Wnt/ $\beta$ -catenin signaling by binding to LRP5 or LRP6 to prevent Wnt-receptor complex formation [10–12].

Alternatively, however, it is possible that Wnt/Wg can signal through LRP/Arr in the absence of Fzs. In agreement with this possibility, an intracellular domain of LRP5 was reported to interact directly with Axin [13], and Wnt signaling appears to stimulate the recruitment of Axin to LRP5 at the membrane, where Axin is degraded. Furthermore, it was reported that LRP signaling can be activated in a Dsh – independent fashion [14]. These data suggest that Wnt/Wg could signal through LRP directly to the  $\beta$ -catenin destruction complex in a Fz- and Dsh-independent fashion.

To evaluate whether Fzs are required for the transduction of Wnt/Wg signaling in the presence of LRPs, we have established a sensitive method to measure Wg signaling activities using a LEF-luciferase reporter in *Drosophila* S2 cells. We show that DFz2 and LRP/Arr cooperate with Wg to activate the signaling pathway. Using a double-strand RNA interference (dsRNAi) technique designed to eliminate specific proteins [15,16], such as Arr, DFz2 and Dsh,

we have developed strong evidence that Wg requires both types of receptors to transduce a signal efficiently through Dsh to stabilize  $\beta$ -catenin.

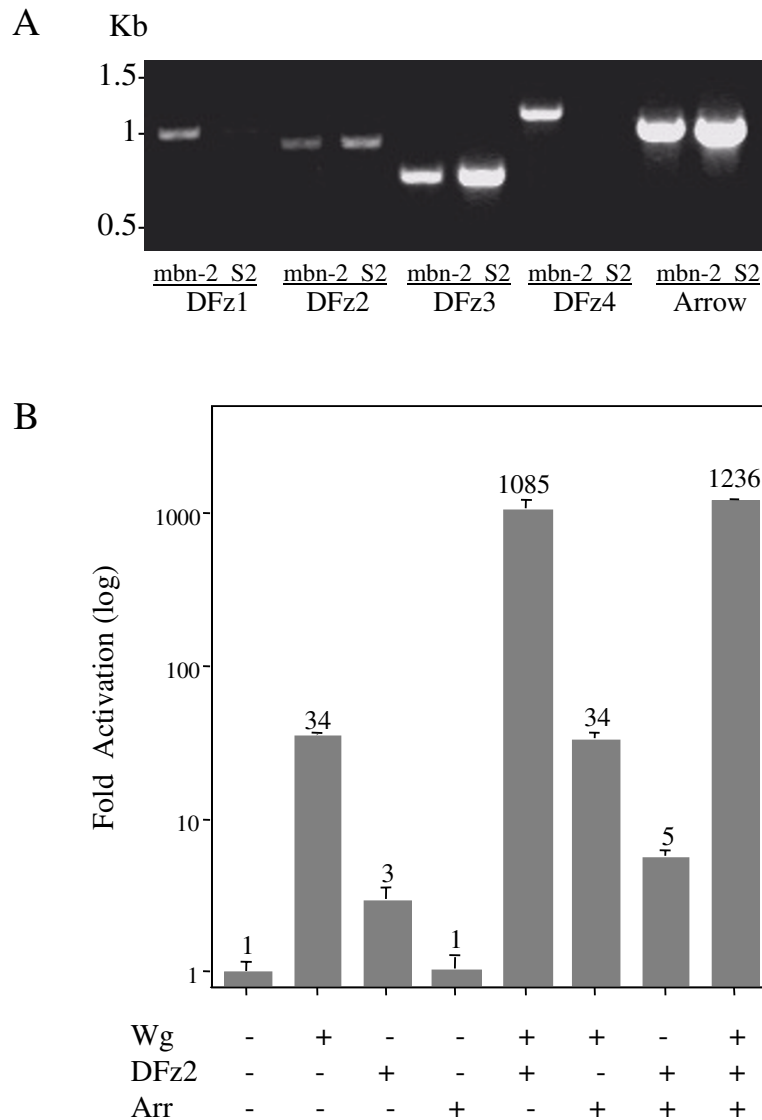
## Results

### **Wg and its receptors Arr and DFz2 can activate LEF-dependent transcription**

We wished to ask whether Wnt/Wg can signal through LRP/Arrow in the absence of Fz. Since 4 Fz genes have been identified in *Drosophila*, compared to 11 Fz genes in vertebrates, we decided to use *Drosophila* S2 cells for these experiments. In earlier reports, Northern blot hybridization and RT-PCR failed to detect DFz1, DFz2, and DFz3 in S2 cells [6,17,18]. Using a one-step RT-PCR assay to measure the expression levels of all 4 DFzs and Arr in the same S2 cells used by Yanagawa *et al.* (Figure 1A), we detected DFz2, DFz3, and Arr mRNAs, but not DFz1 and DFz4 mRNAs after 40 cycles of amplification. In contrast, in mbn-2 cells all 4 DFzs mRNAs were detected by this procedure. No PCR products were found when reverse transcriptase was omitted from the reactions, eliminating the possibility that the results were due to contamination with genomic DNA. All of the PCR products were gel-purified and sequenced to confirm that they contain the expected Fz sequences (data not shown). Thus S2 cells express mRNAs for Arr, DFz2 and DFz3, but mRNAs for DFz1 and DFz4 are either absent or below levels required for detection with our RT-PCR assay.

Previous studies have measured the abundance of Armadillo (Arm), a *Drosophila* homologue of  $\beta$ -catenin, to assess Wg signaling in S2 cells. We adapted a LEF-luciferase reporter system [19] to monitor  $\beta$ -catenin-mediated Wg signaling in S2 cells, a more quantitative and convenient assay. The luciferase reporter plasmid, which has multiple LEF-1 binding sites, was cotransfected into S2 cells with the coding sequence for mouse LEF-1 in the *Drosophila* expression vector pPacPL. *Renilla* luciferase was included as a transfection control. The activation of Wnt signaling by various effectors in pPacPL was then determined by measurement of relative luciferase activity (Figure 1B).

Transient transfection of a Wg expression plasmid activated LEF-dependent transcription 34-fold; this result was not changed by co-transfection with an Arr plasmid (which also had no effect in the absence of Wg), implying either that Arr levels were not limiting or that Arr was not required for Wg effects. In contrast, co-transfection with a DFz2 plasmid augmented Wg signaling more than 1000-fold above control levels and about 30-fold above levels observed with Wg alone, suggesting that DFz2 was required for efficient Wg signaling and, although detectable in S2 cells, was present in limiting amounts. The DFz2 plasmid had a small but significant effect without addition of Wg, but the addition of Arr plasmid had little



**Figure 1**

**The expression of Wg dual receptors and their activities in S2 cells.** One-step RT-PCR was performed to study the expression of Arr and DFz2 in mbn-2 cells and S2 cells (A). 0.1 µg RNA from each cell line served as the template, and primers for Arr and DFz1, 2, 3 and 4 (see Methods) were used for the RT-PCR reactions. (B) S2 cells were transfected with the indicated plasmids and the plasmids as described in Methods. Fold-activation values were measured relative to the levels of luciferase activity in cells transfected with empty vectors and normalized by *Renilla* luciferase activities. These values are plotted as a log function. Averages of the fold-activation are indicated above each column. All experiments were done in triplicate; error bars represent standard deviations.

or no effect on DFz2 activity in the presence or absence of Wg plasmid (Figure 1B).

#### **Wg signaling is impaired with the loss of function of DFz2 or Arr**

Results in the preceding section indicate that DFz2 has an important role in transducing a Wg signal in S2 cells, but do not reveal whether Arr also has a role in concert with, or independent of, Fz-mediated signaling. To explore these issues, we used dsRNAi to reduce the levels of Arr and DFz2 RNAs in S2 cells in which Wg signaling was stimulated, since others have shown that the expression of endogenous genes in these cells can be eliminated or reduced by direct application of T7-transcribed dsRNAs [15,16]. Using this approach (Figure 2), we found that the previously observed, approximately 30-fold stimulation of luciferase activity by the Wg expression plasmid was reduced by 70% or more when S2 cells were co-transfected with inhibitory RNAs for Arr, DFz2, or both (Figure 2A), implying that endogenous levels of both types of receptor are required for an efficient response to Wg. The extensive inhibition with either RNA species favors the idea that Wg signaling requires coordinated rather than independent actions of endogenous Arr and DFz2 receptors. However, the failure to eliminate signaling entirely with inhibitory RNAs against both receptors cannot be readily interpreted, since it is unlikely that receptor production was eliminated in every cell in the cultures.

Importantly, the synergistic effect of co-transfected Wg and DFz2 plasmids, approximately 1000-fold, was also dramatically reduced by addition of inhibitory RNA against Arr (Figure 2B), implying that endogenous Arr is required for the stimulatory effect of exogenous DFz2 on Wg signaling. This result also suggests that DFz2 and Arr work cooperatively to transduce a Wg signal. As additional controls in these experiments, we showed that inhibitory RNA against Dsh, a cytoplasmic phosphoprotein believed to mediate Wg signaling via Fz receptors, blocks about 60% of signaling produced by co-transfection with Wg and DFz2 plasmids. Moreover, we found that S2 cells treated with dsRNAi against both Arr and Dsh further impaired the Wg and DFz2 signaling activity up to 95% (Figure 2B). As expected, inhibitory RNAs against Arr and DFz2 have no effect on luciferase synthesis promoted by a degradation-resistant mutant of  $\beta$ -catenin (Figure 2C).

#### **The synergy between Wg and DFz2 requires the CRD domain of DFz2, but not the carboxyterminus**

DFz2, like other members of the Fz protein family, contains a cysteine-rich domain (CRD) near the aminotermi- nus, followed by a seven-transmembrane (7-TM) domain and a cytoplasmic carboxyterminal tail. DFz2 reportedly binds to Wg through its CRD domain [6], but it is not known which proteins interact with the carboxyterminus

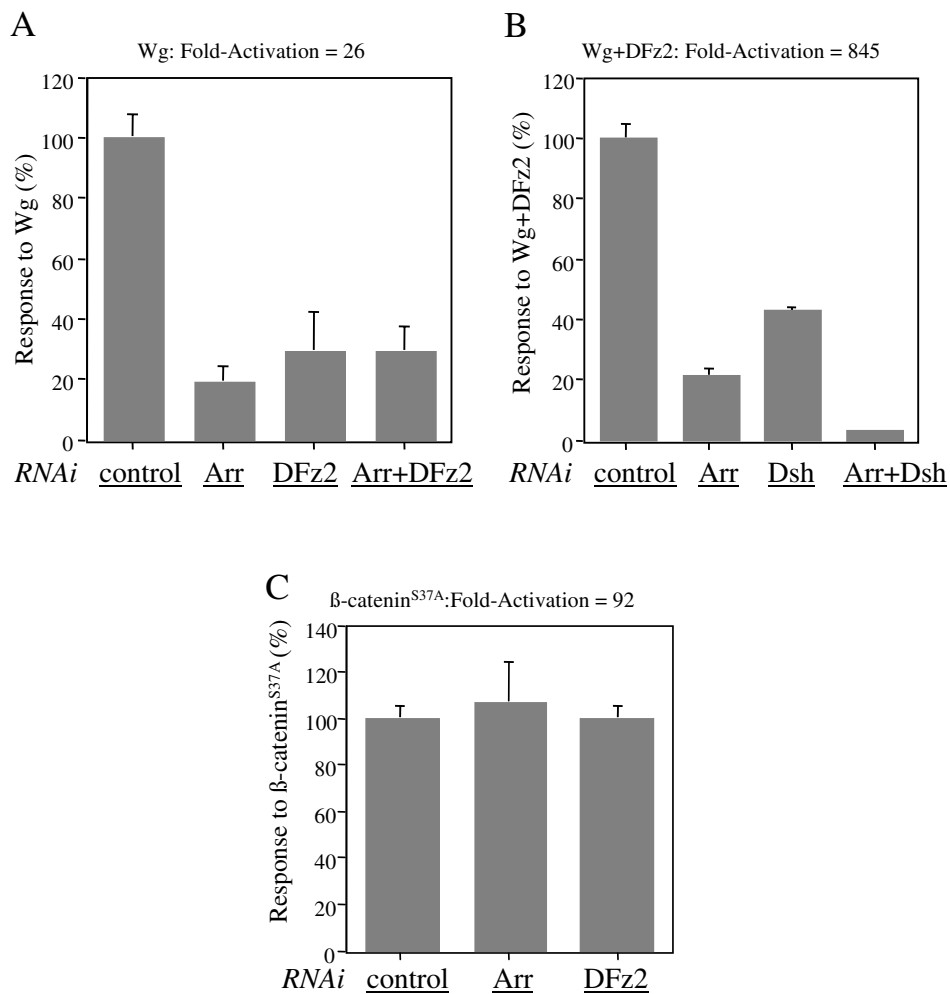
or with cytoplasmic loops in the 7-TM region of DFz2 to transduce the signal to the cytoplasmic signaling component Dsh. However, a short conserved cytoplasmic motif in the carboxylterminal region of Fzs, including DFz2, was reported to be important for the activation of Wnt/ $\beta$ -catenin signaling in mammalian cells, based on mutational analysis [20].

To determine which domains in DFz2 are important for its synergistic activity with Wg in the S2 cell assay, we deleted the regions encoding the CRD domain (DFz2 $\Delta$ CRD) or the cytoplasmic tail (DFz2 $\Delta$ C) in pPacPL (Figure 3A) and tested the deletion constructs shown in panel A in the luciferase assay described earlier (Figure 3B). In this experiment, a Wg plasmid activated the luciferase reporter only 12-fold above the vector control; wild-type DFz2 plasmid alone stimulated luciferase levels 7-fold, but neither deletion mutant of DFz2 had any effect, consistent with an earlier report that DFz2 with a truncated carboxyterminus fails to induce the expression of *Xnr/Siamois* [21]. However, DFz2 $\Delta$ C stimulated signaling over 700-fold when delivered in concert with Wg, a synergistic effect nearly as strong as observed with wild type DFz2 (nearly 1700-fold in this experiment). In contrast, DFz2 $\Delta$ CRD showed no synergistic effect, a result that can most likely be explained by a loss of Wg binding capacity. The result with DFz2 $\Delta$ C, however, implies that the Wg signal can be transduced through DFz2 in a carboxyterminus-independent manner, either through the 7-TM domain or through the interaction with Arr that was implied by the previous experiments. In addition, the synergistic effect of Wg and DFz2 $\Delta$ C was blocked by Dsh dsRNAi (data not shown), implying that Dsh is required to transduce the signal from Wg through DFz2 $\Delta$ C to  $\beta$ -catenin. Therefore, the interaction between DFz2 and Dsh does not depend solely on the carboxyterminus of DFz2.

#### **LRP6 and an aminoterminal mutant of LRP6 can stimulate the Wg signaling pathway, but the ability of LRP6 to replace the requirement for Arrow in the synergy between Wg and DFz2 requires the aminotermi- nus of LRP6**

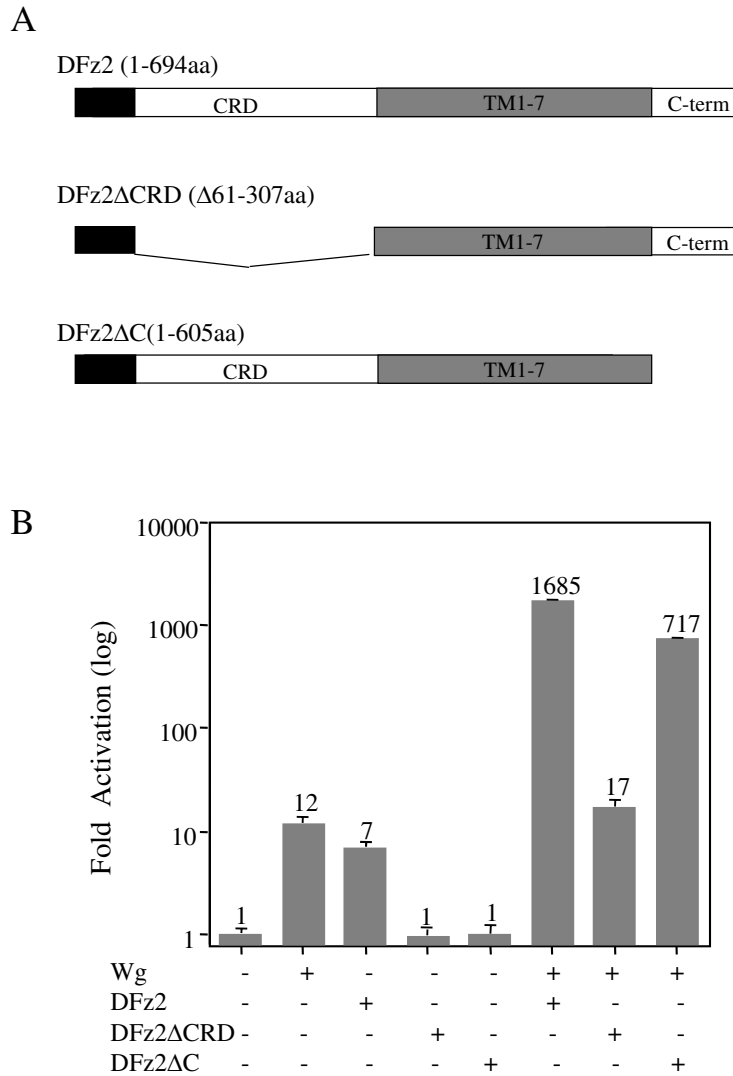
LRPs have been shown to bind to Wnt/Wg through the first and second EGF repeats of their extracellular domain [11]. Our unpublished work in mammalian cells and results from others [11,13] demonstrate that the expression of LRP6 or an aminoterminal truncation mutant (LRP6 $\Delta$ N), which should no longer bind to Wnt, can activate the Wnt signaling pathway.

To investigate whether these constructs can also function in S2 cells and whether their activities can synergize with Wg, we transferred LRP6 and LRP6 $\Delta$ N into the *Drosophila* expression vector pPacPL (Figure 4A) and tested them alone and with various combinations of Wg and DFz2 in S2 cells (Figure 4B). Results with Wg and DFz2 alone or



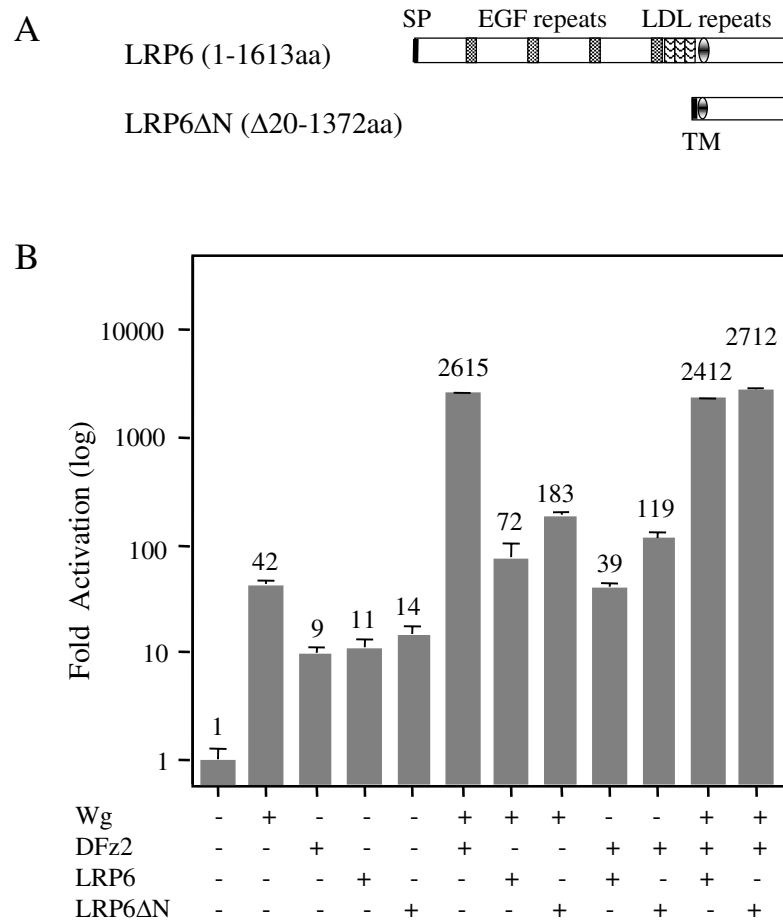
**Figure 2**

**Wg signaling activity is impaired with the loss of either Arr or DFz2 function by dsRNA interference.** S2 cells were treated with the following dsRNAs: Aco as a control (A-C), Arr (A-C), DFz2 (A, C), and Dsh (B). The next day, cells were transfected with the following expression plasmids: Wg (A), Wg and DFz2 (B) and  $\beta$ -catenin<sup>S37A</sup> (C) together with the reporters. The level of fold activation was set to 100% for cells treated with control dsRNAi, and the actual value is indicated above the figures. The responses of the transfected S2 cells treated with different dsRNAs are based on the percentage of fold activation compared with the control. All experiments were done in triplicate; error bars represent standard deviations.



**Figure 3**

**The synergy between Wg and DFz2 requires the CRD domain, but not the carboxyterminus of DFz2.** (A) Diagram of the full-length DFz2 and its truncation constructs with deleted CRD domain or carboxyterminus. (B) S2 cells were transfected with indicated expression plasmids. Fold activation values were measured relative to the levels of luciferase activity in cells transfected with empty vectors and normalized by *Renilla* luciferase activities. These values are plotted as a log function. Averages of the fold activation are indicated above each column. All experiments were done in triplicate; error bars represent standard deviations.



**Figure 4**

**LRP6 and LRP6ΔN stimulate the signaling pathway.** (A) Diagram of the full-length LRP6 and its truncated construct LRP6ΔN with deleted aminotermis. SP represents the signal peptide and TM denotes the transmembrane domain. (B) S2 cells were transfected with the indicated expression plasmids. Fold activation values were measured relative to the levels of luciferase activity in cells transfected with empty vectors and normalized by *Renilla* luciferase activities. These values are plotted as a log function. All experiments were done in triplicate; error bars represent the standard deviations.

together were similar to those observed in other experiments (e.g. Figure 1), but both wild-type and mutant LRP6, unlike the LRP homolog Arr, activated signaling about 10- to 15-fold alone, 2- to 4-fold when co-transfected with Wg, and 4- to 10-fold when co-transfected with DFz2.

Since we have been unable to measure Arr or LRP proteins directly in transfected cells, we cannot distinguish between more efficient expression or greater inherent activity of the LRPs as an explanation of the different effects of LRPs and Arr. Signaling via LRP6 $\Delta$ N, however, while dependent on Arm as expected, is not dependent on Dsh or DFz2, as judged by the use of dsRNAi (Figure 5A). Similar results were observed for full-length LRP6 (Figure 5B). These results are consistent with claims that LRPs can signal through an interaction of the carboxyterminus with Axin [13].

To ask whether LRP6 can replace the requirement for endogenous Arr in the synergy between Wg and DFz2, as observed earlier in Figure 2B, we again used Arr-specific dsRNAi to try to block the strong activation of signaling by Wg plus DFz2, in the presence and absence of the LRP6 constructs (Figure 5C). Again, Arr dsRNAi markedly inhibited signaling by Wg and DFz2, but no inhibition was observed in the presence of the LRP6 plasmid, implying the LRP6 could substitute for Arr in these synergistic events. In contrast, LRP6 $\Delta$ N cannot effectively substitute for Arr, presumably reflecting a need for an interaction of the LRP family member with Wg to achieve synergy. Some residual activity in this experiment may reflect the inherent Wg signaling activity of wild type and mutant LRPs observed in Figure 4B.

## Discussion

In this report, we describe a convenient cell culture-based assay for assessing the contributions made by candidate components of Wnt signaling pathways to the activation of the  $\beta$ -catenin-mediated branch. We have attempted to alter the concentrations of components by transient transfection with plasmids encoding wild type and mutant proteins and/or with dsRNAi that can block production of proteins from endogenous or exogenous genes. Pathway activity was then assessed by measurement of luciferase expressed from a co-transfected plasmid containing firefly luciferase-coding sequence under the control of LEF binding elements.

The assay makes use of *Drosophila* S2 cells in which two of the four fly Frizzled proteins are undetectable by a sensitive PCR assay. Two others (DFz2 and 3) are detectable (Figure 1A), but DFz2 is in limiting quantities, since signaling by Wg, the *Drosophila* ortholog of mammalian Wnt-1, can be dramatically stimulated by co-transfection

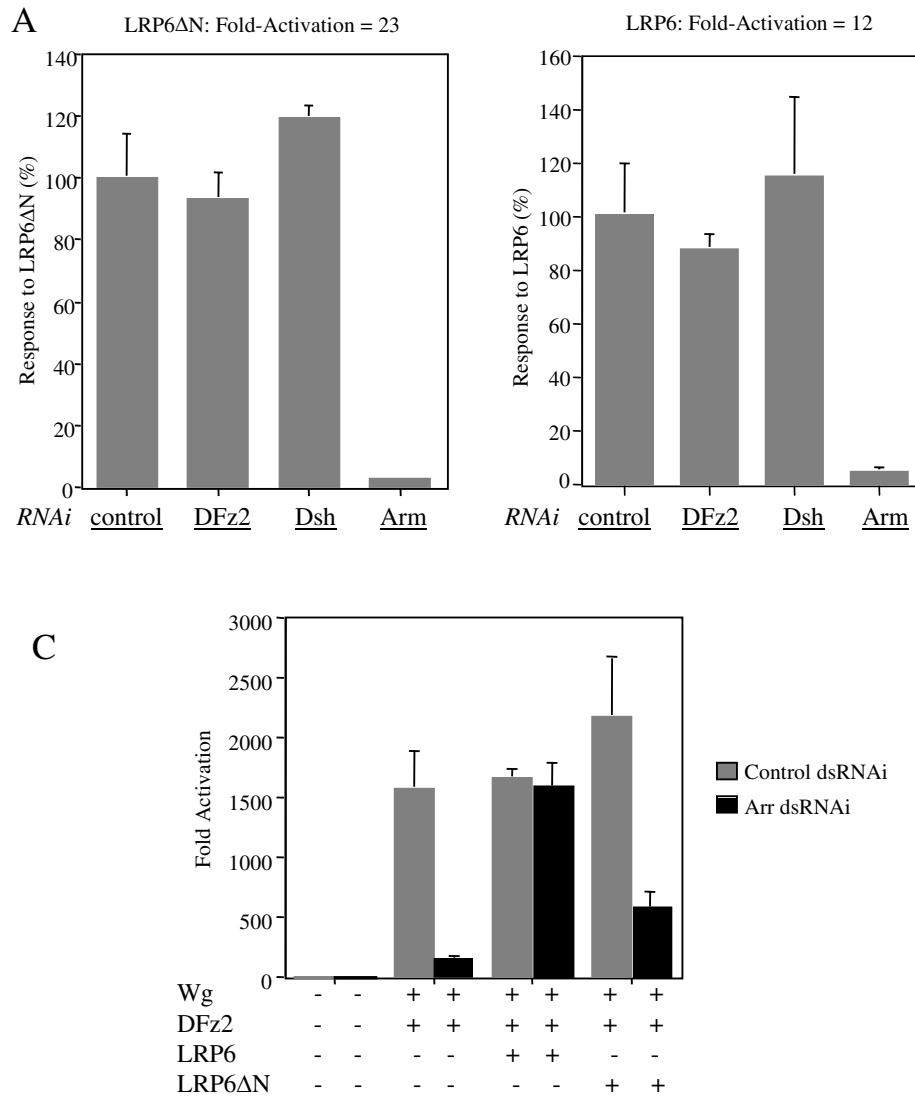
with a DFz2 expression plasmid (Figure 1B). This effect requires the aminoterminal of DFz2, implying a requirement for binding Wg to the Fz CRD, but not the carboxyterminus, suggesting that the signal may be, in part, transmitted through an interaction of Wg-Frizzled complex with another protein.

Arrow, the fly homolog of the LRPs, which are thought to be Wnt co-receptors in mammalian cells, is an obvious candidate for such an interactive protein. Experiments with Arr dsRNAi clearly establish a requirement for endogenous Arr to generate the synergistic response to exogenous Wg plus DFz2 in S2 cells (Figure 2). We have also found that mammalian LRP6 can replace the need for Arr in this context (Figure 4) and that the aminoterminal of LRP6 must be maintained for most or all of the effect. Therefore it is most likely that Wg, DFz2 and LRP/Arr form a trimeric ligand-receptor complex to activate the signaling pathway. However, it was recently reported that no direct interactions between Arrow and Wg were detected [22]. It is possible that LRP aminoterminal is required for interacting with another extracellular protein rather than Wnt and Fz.

It is known that Dsh is a key component in transducing a Wg signal [23–25]. However, the mechanism by which Dsh transmits a signal to the  $\beta$ -catenin destruction complex is not clear. Fzs can recruit Dsh to the plasma membrane [21,26], but it is not known whether this recruitment is essential in signaling. While the functions of Fz and Dsh remain to be clarified, it is possible that upon Wnt signaling, Fzs recruit Dsh to the membrane and Dsh brings Axin to the carboxyterminus of LRPs. If the carboxyterminus of LRP6 can interact with Axin independently of DFz2 and Dsh, it might reduce the cytoplasmic level of Axin and help stabilize  $\beta$ -catenin. The observation that LRP5 $\Delta$ N activates the Wnt/Wg signaling pathway in a Dsh-independent manner [14], and our data with overexpressed LRP6 $\Delta$ N and LRP6, further support this proposal.

The LEF-dependent luciferase assay in S2 cells is versatile, dynamic, rapid and can provide important clues about interactions important for Wnt signaling. The use of dsRNAi helps to refine the nature of such interactions and their effects on downstream events in the signaling circuitry. Because we have not, however, measured the concentrations of the relevant signaling components or studied interactions of these components with more sophisticated tools, the conclusions we draw are provisional and require additional support. However, they are consistent with the prevailing model in which Wg forms a trimeric complex with Arr and DFz2 that transduces a signal through Dsh to activate LEF/TCF-responsive promoters.





**Figure 5**

**LRP $\Delta$ N activate the pathway independent of DFz2 and Dsh and N-terminus of LRP is required for the synergistic activity of Wg and DFz2.** S2 cells were treated with the following dsRNAs: control Aco (A-C), DFz2 (A, B), Dsh (A, B), Arr (C) and Arr (C). The next day cells were transfected with indicated expression plasmids. Fold activation values were measured relative to the levels of luciferase activity in cells transfected with empty vectors and normalized by *Renilla* luciferase activities. The level of fold activation was set to 100% for cells treated with Aco dsRNA and the actual values are indicated above the figures (A, B). All experiments were done in triplicate; error bars represent standard deviations.

## Conclusions

We conclude that Wnt/Wg signaling requires functional interactions of both LRP/Arr and Fz classes of receptors, and the cytoplasmic component Dsh. The extracellular regions of both receptors are crucial for receiving the Wg signal, while the carboxyterminus of DFz2 is not absolutely required for reception of the Wnt/Wg signal.

## Methods

### Cell culture, transfection and luciferase assay

S2 cells were cultured at room temperature in *Drosophila* Schneider medium supplemented with 10% heat-inactivated fetal bovine serum. The following plasmids were used in each experiment: 0.1 µg LEF-luciferase reporter [19], 0.2 µg mouse LEF-1 and 0.1 µg *Renilla* luciferase. *Renilla* luciferase was included in each transfection to control the efficiency of transfection. All *Drosophila* expression constructs were cloned in the vector pPacPL [27,28]. Cells grown in 6-well plates were transfected with 0.5 µg of indicated plasmid together with the reporter plasmids using Cellfectin reagent (Invitrogen Life Technologies). The final amount of DNA was adjusted to an equal level using pPacPL vector DNA. Approximately 48 hours after transfection, cells were lysed in a lysis buffer (Promega) by shaking at room temperature for 30 minutes. The luciferase activities of the lysates were then analyzed by a luminometer (EG&G Berthold, lumat LB9507) to measure the dual luciferase activities of LEF-luciferase reporter and *Renilla* luciferase using the Promega Dual-Luciferase reporter assay system. All the experiments were performed at least three times, and each time in triplicates.

### RT-PCR

RNA from S2 cells and mbn-2 cells was prepared using Qiagen RNA miniprep columns and was treated with RQ1 RNase-Free DNase (Promega). 0.1 µg RNA from each cell line was used as a template for one-step RT-PCR (One-step RT-PCR kit from Invitrogen). The following primers were used in the reactions:

**DFz1:** 5' primer, 5'-ATGTGGCGTCAAATCCTG-3';

3' primer, 5'-TGGACATCATCTGCAGGC-3'.

**DFz2:** 5' primer, 5'-AGACACAATCGACTGAAGG-3';

3' primer, 5'-AGTGAGGTTTCATGTACCAG-3' (These two primer pairs are based on [18]).

**DFz3:** 5' primer, 5'-ACAGTGAAGAGTAGTGCTCG-3';

3' primer, 5'-CCACCTCCTGTGGAATCTGC-3',

**DFz4:** 5' primer, 5'-TACATTCGCTAAGGCTAC-3';

3' primer, 5'-GACCTTCCATACACATCG-3'

and

**Arr:** 5' primer, 5'-GAAGATGTGACAACGAAAGC-3';

3' primer, 5'-CATGCTCTGACAGAGTTCG-3'.

### RNAi in S2 cells

The method was adapted from the procedure published by the Dixon lab [15,16]. PCR reactions were performed

using primers containing the T7 polymerase binding site. We used dsRNA against a gene unrelated to the Wg signaling pathway, i.e. Aconitase (*Aco*), as a negative control. The primers used are:

**Aco:** 5' primer, 5'-GGATTAATACGACTCACTATAGGGA GACTCTGTCCAAGTTCGACTCG-3'; 3' primer, 5'-GGATTAATACGACTCACTATAGGGAGAGATAGAGT AACACCCTTGC-3';

**DFz2:** 5' primer, 5'-GGATTAATACGACTCACTATAGGGA GAGATCACCATACCAATGTGTGCG-3'; 3' primer, 5'-GGATTAATACGACTCACTATAGGGAGAGTATGCCGC AGTTTGAACG-3';

**Arr:** 5' primer, 5'-GGATTAATACGACTCACTATAGGGA GACAGATCGATGTGATCGTTAGG-3'; 3' primer, 5'-GGATTAATACGACTCACTATAGGGAGACCATGCTCT GACAGAGTTCG-3';

**Dsh:** 5' primer, 5'-GGATTAATACGACTCACTATAGGGA GACCATCACCAGAAGATGATGG-3'; 3' primer, 5'-GGATTAATACGACTCACTATAGGGAGACCCTAACGA TCTCCTCGAGG-3';

**Arm:** 5' primer, 5'-GGATTAATACGACTCACTATAGGGA GACAGCTAAGCCAGACACGTTTC-3'; 3' primer, 5'-GGATTAATACGACTCACTATAGGGAGAGCTTTCCTG GTTGCCGTAGG-3'.

A megascript T7 transcription kit (Ambion) was used to generate both sense and antisense strand RNA. The RNA was annealed to form double strand RNA. 15 µg of each dsRNA was then added to S2 cells in 6-well plates containing 10<sup>6</sup> cells per well. 8 to 16 hours after dsRNAi treatment, cells were transfected with different constructs and reporters. 48 hours after transfection, cells were lysed and luciferase activity was measured as above.

### Authors' contributions

LS designed and performed the experiments. HV supervised the work. Both authors read and approved the final manuscript.

### Acknowledgements

We would like to thank Shin-ichi Yanagawa for providing S2 cells, Dianqing Wu for LEF and LEF-luciferase reporters, Fred Hess for LRP6 (MTA through Merck), Steve Dinardo for Arrow cDNA, Po Chen for providing multiple reagents, including pPacPL, and for useful advice on working with S2 cells. Katie Brunner kindly provided mbn-2 cells. We thank people in the Varmus lab, especially Feng Cong, Mario Chamarro and Sandra Orsulic, for many stimulating discussions regarding this paper. We thank William Pao for a critical reading of the manuscript.

### References

1. Cadigan KM and Nusse R **Wnt signaling: a common theme in animal development** *Genes & Development* 1997, **11**:3286-305
2. Wodarz A and Nusse R **Mechanisms of Wnt signaling in development** *Annual Review of Cell & Developmental Biology* 1998, **14**:59-88
3. Nusse R and Varmus HE **Wnt genes** *Cell* 1992, **69**:1073-87
4. Polakis P **Wnt signaling and cancer** *Genes Dev* 2000, **14**:1837-51

5. Yang-Snyder J, Miller JR, Brown JD, Lai CJ and Moon RT **A frizzled homolog functions in a vertebrate Wnt signaling pathway** *Curr Biol* 1996, **6**:1302-6
6. Bhanot P, Brink M, Samos CH, Hsieh JC, Wang Y, Macke JP, Andrew D, Nathans J and Nusse R **A new member of the frizzled family from Drosophila functions as a Wingless receptor** *Nature* 1996, **382**:225-30
7. Pinson KI, Brennan J, Monkley S, Avery BJ and Skarnes WC **An LDL-receptor-related protein mediates Wnt signaling in mice** *Nature* 2000, **407**:535-8
8. Tamai K, Semenov M, Kato Y, Spokony R, Liu C, Katsuyama Y, Hess F, Saint-Jeannet JP and He X **LDL-receptor-related proteins in Wnt signal transduction** *Nature* 2000, **407**:530-5
9. Wehrli M, Dougan ST, Caldwell K, O'Keefe L, Schwartz S, Vaizel-Ohayon D, Schejter E, Tomlinson A and DiNardo S **arrow encodes an LDL-receptor-related protein essential for Wingless signaling** *Nature* 2000, **407**:527-30
10. Bafico A, Liu G, Yaniv A, Gazit A and Aaronson SA **Novel mechanism of Wnt signaling inhibition mediated by Dickkopf-1 interaction with LRP6/Arrow** *Nat Cell Biol* 2001, **3**:683-6
11. Mao B, Wu W, Li Y, Hoppe D, Stanek P, Glinka A and Niehrs C **LDL-receptor-related protein 6 is a receptor for Dickkopf proteins** *Nature* 2001, **411**:321-5
12. Semenov MV, Tamai K, Brott BK, Kuhl M, Sokol S and He X **Head inducer Dickkopf-1 is a ligand for Wnt coreceptor LRP6** *Curr Biol* 2001, **11**:951-61
13. Mao J, Wang J, Liu B, Pan W, Farr GH 3rd, Flynn C, Yuan H, Takada S, Kimelman D and Li L **Low-density lipoprotein receptor-related protein-5 binds to Axin and regulates the canonical Wnt signaling pathway** *Mol Cell* 2001, **7**:801-9
14. Li L, Mao J, Sun L, Liu W and Wu D **Second cysteine-rich domain of Dickkopf-2 activates canonical Wnt signaling pathway via LRP-6 independently of dishevelled** *J Biol Chem* 2002, **277**:5977-81
15. Caplen NJ, Fleenor J, Fire A and Morgan RA **dsRNA-mediated gene silencing in cultured Drosophila cells: a tissue culture model for the analysis of RNA interference** *Gene* 2000, **252**:95-105
16. Worby CA, Simonson-Leff N and Dixon JE **RNA interference of gene expression (RNAi) in cultured Drosophila cells** *Sci STKE* 2001, **2001**:L1
17. Sato A, Kojima T, Ui-Tei K, Miyata Y and Saigo K **Dfrizzled-3, a new Drosophila Wnt receptor, acting as an attenuator of Wingless signaling in wingless hypomorphic mutants** *Development* 1999, **126**:4421-30
18. Yanagawa S, Lee JS and Ishimoto A **Identification and characterization of a novel line of Drosophila Schneider S2 cells that respond to wingless signaling** *J Biol Chem* 1998, **273**:32353-9
19. Hsu SC, Galceran J and Grosschedl R **Modulation of transcriptional regulation by LEF-1 in response to Wnt-1 signaling and association with beta-catenin** *Mol Cell Biol* 1998, **18**:4807-18
20. Umbhauer M, Djiane A, Goisset C, Penzo-Mendez A, Riou JF, Boucaut JC and Shi DL **The C-terminal cytoplasmic Lys-thr-X-X-X-Trp motif in frizzled receptors mediates Wnt/beta-catenin signaling** *Embo J* 2000, **19**:4944-54
21. Boutros M, Mihaly J, Bouwmeester T and Mlodzik M **Signaling specificity by Frizzled receptors in Drosophila** *Science* 2000, **288**:1825-8
22. Wu CH and Nusse R **Ligand receptore interactions in the WNT signaling pathway in Drosophila** *J Biol Chem* 2002, **279**:29
23. Siegfried E, Wilder EL and Perrimon N **Components of wingless signaling in Drosophila** *Nature* 1994, **367**:76-80
24. Noordermeer J, Klingensmith J, Perrimon N and Nusse R **dishevelled and armadillo act in the wingless signaling pathway in Drosophila** *Nature* 1994, **367**:80-3
25. Klingensmith J, Nusse R and Perrimon N **The Drosophila segment polarity gene dishevelled encodes a novel protein required for response to the wingless signal** *Genes Dev* 1994, **8**:118-30
26. Rothbacher U, Laurent MN, Deardorff MA, Klein PS, Cho KW and Fraser SE **Dishevelled phosphorylation, subcellular localization and multimerization regulate its role in early embryogenesis** *Embo J* 2000, **19**:1010-22
27. Koelle M and Hogness D **Technical Notes: Plasmid vectors for expressing proteins in tissue culture cells or studying enhancer function** *DIN* 1992, **8**:
28. Koelle M and Hogness D **Technical Notes: Plasmid vectors for expressing proteins in tissue culture cells or studying enhancer function** *DIS* 1993, **72**:197

Publish with **BioMed Central** and every scientist can read your work free of charge

"BioMed Central will be the most significant development for disseminating the results of biomedical research in our lifetime."

Sir Paul Nurse, Cancer Research UK

Your research papers will be:

- available free of charge to the entire biomedical community
- peer reviewed and published immediately upon acceptance
- cited in PubMed and archived on PubMed Central
- yours — you keep the copyright

Submit your manuscript here:  
[http://www.biomedcentral.com/info/publishing\\_adv.asp](http://www.biomedcentral.com/info/publishing_adv.asp)

